

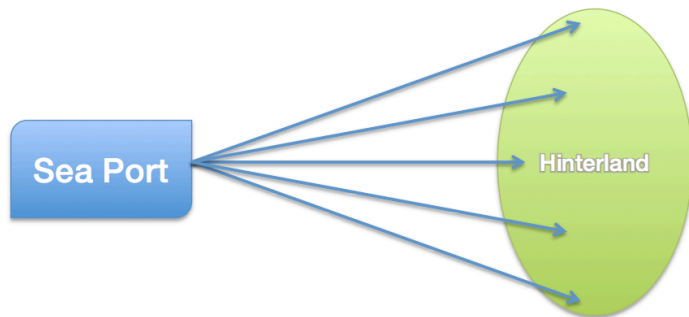
# The Governance of Dryport Integration

- Case Studies on the Implementation and Operation of Dryports

## Dryports seem to be an answer, but what is the question?

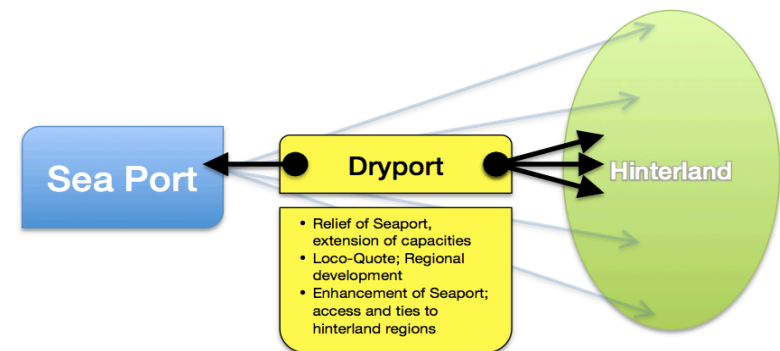
Seaports suffer from

- Lack of space
- Land use problems
- Traffic congestion
- Environmental pollution
- Shortage of public resources



Dryports could

- expand the capacities of ports
- reduce pollution
- diminish the pressure on port space and land close to the port
- help to share costs for infrastructures



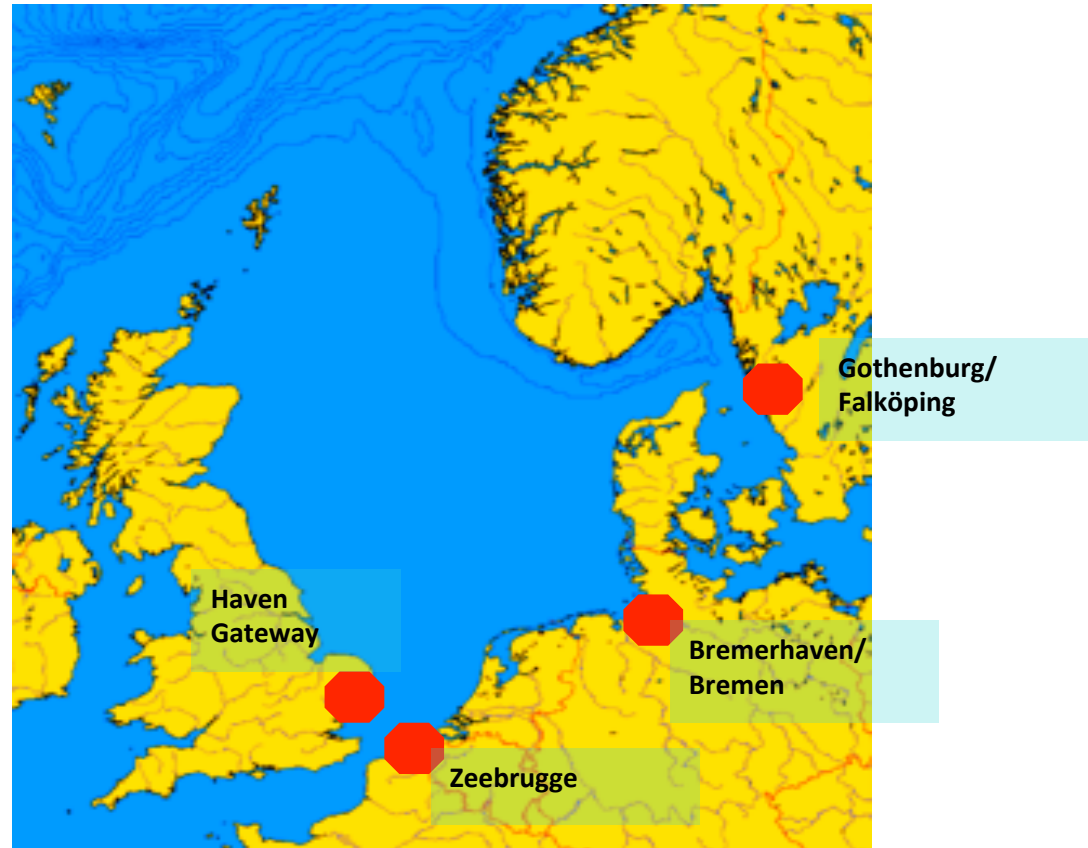
## Guiding Questions

- **Differences:** What are the spacial, economical, political etc. specifications of each case?
- **Conditions:** Which conditions lead to what kind of dryport?
- **Benefits:** Which benefit can a dryport provide for a sea port?
- **Potentials:** Suggestions for efficient integration of hinterland connections and dryports into logistic chains, regional structures and business strategies.



## Four Cases in the North Sea Region

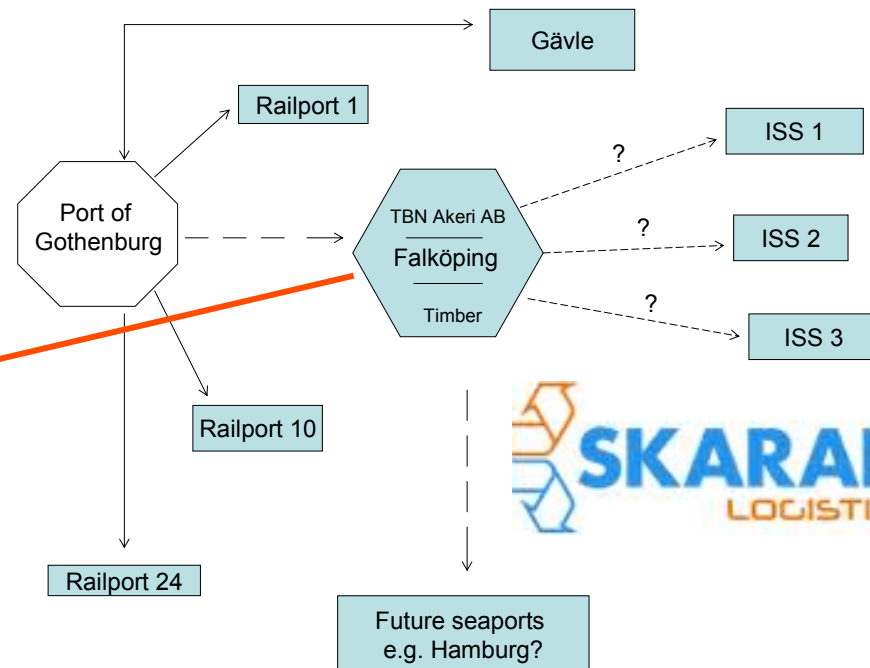
- Bremen/Bremerhaven
- Gothenburg/Falköping
- Haven Gateway
- Zeebrugge



# The Governance of Dryport Integration

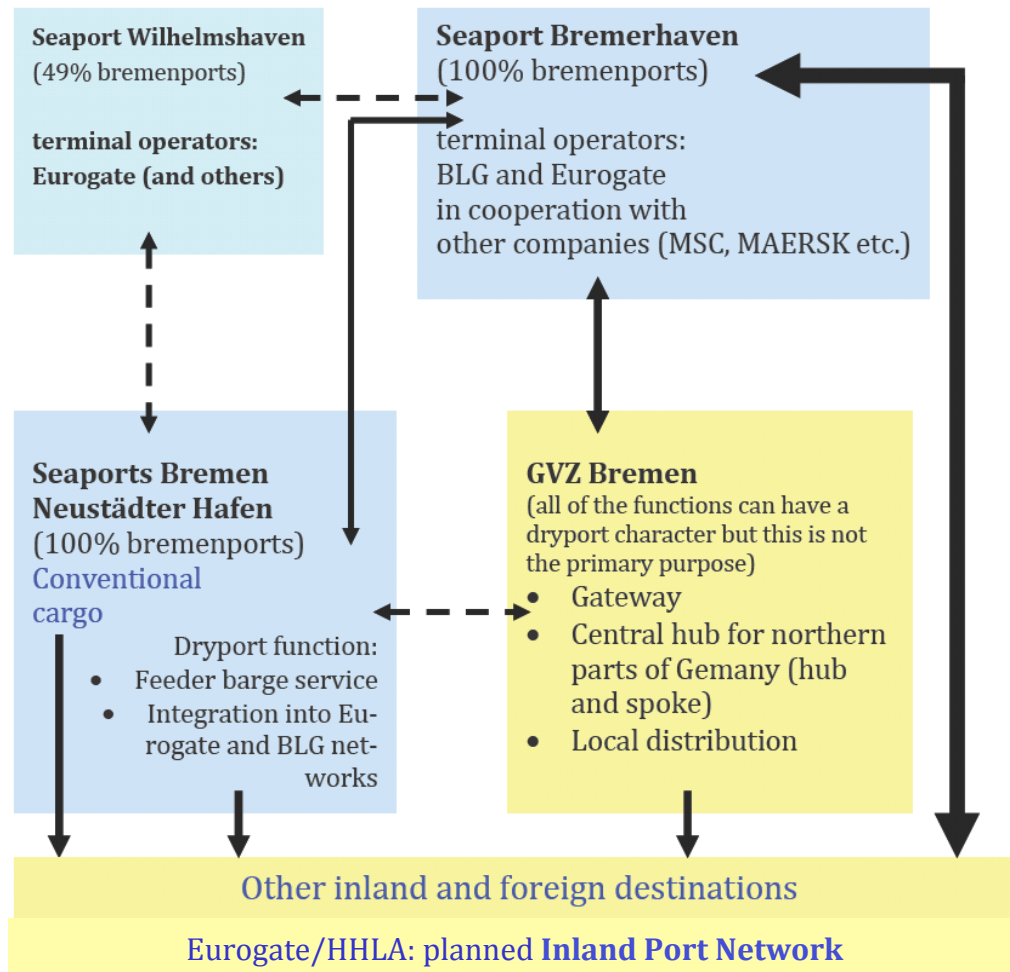


## Gothenburg/Falköping *Inland Hub/Bi-Modal Terminal*





# The Governance of Dryport Integration



## Bremen/ Bremerhaven *Extended Gateway*



## Multiplication of options through dryports:

### Integration in logistic chains (functional dimension)

- Infrastructure (multimodal etc.)
- Spatial structure (freight village etc.)
- Connection to sea port (shuttle – rail or barge)

### Integration in business strategies (economic dimension)

- business models
- micro-level/enterprises
- competition vs. cooperation

### Integration in regional structures (regional dimension)

- local content/added value
- Spatial and environmental
- Job creation and generation of income

# The Governance of Dryport Integration



## Key problem: Governance solutions for the integration of dryports

- **Transfer of responsibilities for common interest to one of the involved partners (example Zeebrugge)**
- **Establishment of new institution for management of cooperation („roof“ organisation; example Bremen)**
- **Personal/Public authority to pull the strings (example Falköping)**
- **Market oriented solution for coordination (charging a lawyer 's office; example Suffolk)**

